

Nettle Creek Color Systems

Monitor Setup and Soft Proofing

Preparation

Environment

Location of your viewing monitor is important to achieve consistent results when color correcting your image files. A proper environment would be in a room with subdued lighting and little or no reflection on the monitor's screen.

Monitors

Monitors display the color gamut and dynamic range of image files as emissive (glowing phosphors), while photographic prints are displaying these same files when printed as reflective. The differences between the two types of display (emissive and reflective) and their corresponding color space make visual matching of the two very difficult to achieve. Using Soft Proofing with full color management of the monitor and printer, along with properly configuring Photoshop versions 6 and above, can provide a fairly accurate preview of how the image will print.

A quality monitor properly profiled is essential to obtain the most accurate results. When purchasing a new monitor go online and read the most up to date information on quality and performance. Purchase the best monitor you can afford.

Monitor Settings

For Nettle Creek Color Systems profile you monitor to the following settings:

Gamma 1.8

6500° Kelvin

Steps for Setting up Soft Proofing

Step One

If you don't already have one, obtain the most up to date monitor profiling tools such as "ColorVisions Spyder" or "x-rite's Eye-One 2 Display" and follow their directions to profile your monitor. After profiling be sure to look in the Windows startup folder and delete any reference to the "Adobe Gamma Loader" as this can invalidate the profiling you just completed. Also changing your desktop background color to a neutral grey may be wise so that any dominate color will not affect your color vision and you can see when your monitor begins to drift.

Step Two

Download and Un-Zip Nettle Creek's Color Management files ([download here](#)) consisting of:

- "NettleCreek_RGB.psf" Soft Proofing File
- "Nettle Gamma_Contrast" Image File.
- "Nettle_Color_Test_Chart" Image File

Copy the Soft Proofing File (NettleCreek_RGB.psf) into the following folder location:

(Windows) C:/Program Files/Common Files/Adobe/Color/Proofing

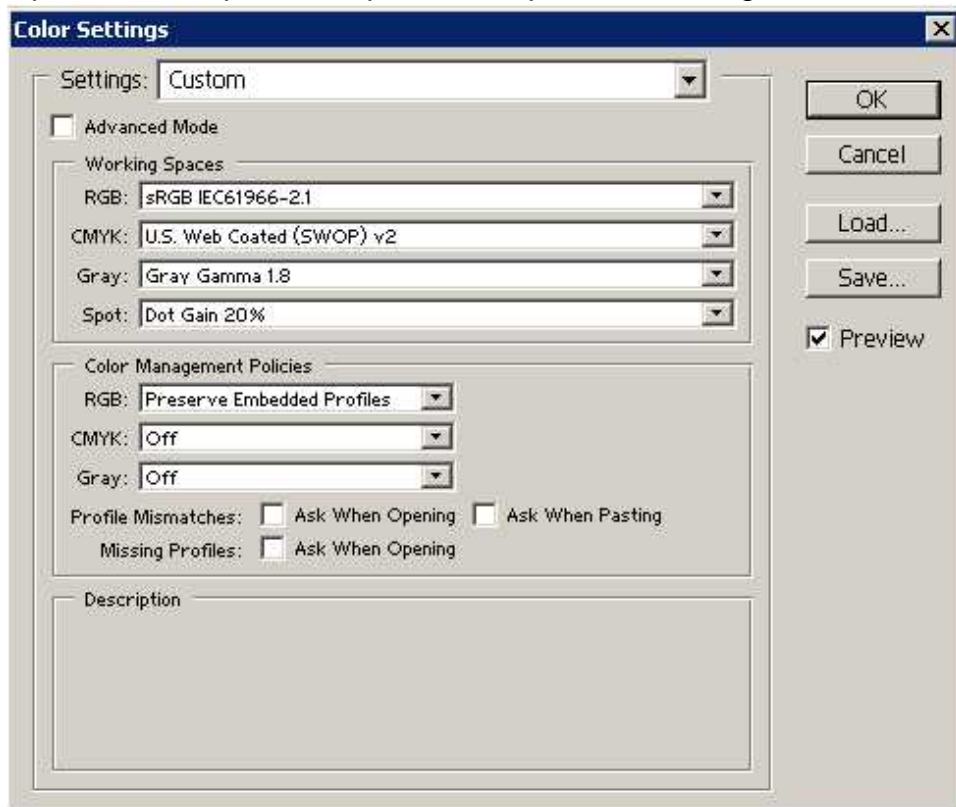
(Mac OS 9.x) System Folder/Application Support/Adobe/Color/Proofing

(Mac OS X) Library/Application Support/Adobe/Color/Proofing

NOTE: If you have not used Soft Proofing before the Proofing folder may not exist. If this is the case simply create a new folder named "Proofing" in the Color folder and then copy the soft proof file into this location.

Step Three

Open Photoshop and setup Photoshop's Color Settings as follows:



NOTE: Most cameras' use **sRGB** as the default color space therefore this is how most users will setup their working space.

Advanced users may use **Adobe RGB (1998)** as a working space if they are using Soft Proofing to view their images. Soft Proofing is a must when using this much larger color space as there may be a significant difference on what is displayed on the monitor and the final print.

Step Four

With no open images in Photoshop, go to "View" then "Proof Setup" and then at the bottom of the drop down list you should see the "NettleCreek_RGB" soft proof file. Click on this file putting a check mark next to it.

Then it's very important that you exit Photoshop using the standard method of

File.....Exit as this will save your settings.

Step Five

Open the (Nettle_Gamma_Contrast.jpg) image file you downloaded into Photoshop.

While holding down the (Ctrl.+Y) keys on your keyboard you can turn on Soft Proofing for this image. You will know you have Soft Proofing enabled when you can see the NettleCreek_RGB listed next to the RGB at the top of the displayed image. **(RGB*/NettleCreek_RGB)**

Follow the instructions printed on the image file.

At this point you may want to tweak your contrast and brightness manually on the monitor a bit to see all eight contrast bars.

Step Six

Open the (Nettle_Color_Test Chart.jpg) image file you downloaded into Photoshop.

Once again try turning on and off the Soft Proofing (Ctrl.+Y) and observe the difference. This shows you how much different colors will print between the Emissive Display of your monitor and the Reflective Output of your printed work especially when using Adobe RGB (1998).

If you have requested hard copy printed images of these downloaded testing files from the Nettle Creek, you can now see the Visual comparison from Displayed and Printed images.

Step Seven

Send test images for printing to verify your setup.